

Contents

● Packing List	1
● Disclaimer and Warning	2
● Battery Safety Guidelines	4
● Quick Start Guide	8
● Preparing and charging the Batteries	9
● Smartphone Installation	10
● Balance Adjustment	11
● Start Up	12
● Introduction Gimbal Control Modes	13
● App Operation	14
● Product Specification	15
● Warranty Card	16

Packing List

Check that all of the following items are in your package. If any items are missing, please contact your dealer.



Gimbal Stabilizer
×1



USB Cable
×1

Disclaimer and Warning

Thank you for purchasing our product. The information contained herein affects your safety and your legal rights and responsibilities. Read this entire document carefully to ensure proper configuration before use. Failure to read and follow instructions and warnings in this document may result in serious injury to you or bystanders, or damage to your product, or damage to your device or property.

By using this product, you hereby signify that you have read this document carefully and that you understand and agree to abide by the terms and conditions herein. You agree that you are solely responsible for your conduct while using this product and for any consequences thereof. You agree to use this product only for purposes that are proper and in accordance with all terms, precautions, practices, policies and guidelines our company has made and may make available.

Our company accepts no liability for damage, injury or any legal responsibility incurred directly or indirectly from the use of this product. The user shall observe safe and lawful practices including, but not limited to those set forth herein.

Glossary

The following terms are used throughout the product literature to indicate various levels of potential harm when operating this products.

Warning: Procedures, which if not properly followed, may incur property damage, grave accident, or serious injury.

CAUTION: Procedures, which if not properly followed, may incur property damage and serious injury.

NOTICE: which if not properly followed, may incur property damage or minor injury.

Disclaimer and Warning

WARNING

Read the ENTIRE User guide to become familiar with the features of this product before operating. Failure to operate the product correctly can result in damage to the product or personal property, and cause serious injury. This is a sophisticated product. It must be operated with caution and common sense and requires some basic mechanical ability. Failure to operate this product in a safe and responsible manner could result in injury or damage to the product or other property. This product is not intended for use by children without direct adult supervision. DO NOT use with incompatible components or in any way otherwise as mentioned or instructed in the product documents provided by our company. This Safety Guidelines herein contain instructions for safety, operation and maintenance. It is essential to read and follow all of the instructions and warnings in the user manual, prior to assembly, setup or use, in order to operate the product correctly and avoid damage or serious injury.

Safety Operation Guidelines

■CAUTION:

- 1.The Gimbal is a high -precision control device, damaged may be caused to stabilizer if it is dropped or subject to external force, and this may result in malfunction
- 2.Make sure the rotation of gimbal axes is not blocked by external force when the gimbal is turned on
- 3.The Gimbal is not waterproof. Prevent contacts of any kind of liquid or clear with. It is recommended to use dry cloth for cleaning.
4. Protect the gimbal from dust and sand during use.

■NOTICE

- 1.Hold the product still when it is powering up to ensure it starts up successfully.

Battery Safety Guidelines

Glossary

■ **WARNING:** Procedures, which if not properly followed, may incur property damage, grave accident, or serious injury..

■ **NOTICE:** Procedures, which if not properly followed, may incur property damage and serious injury.

WARNING

Read the ENTIRE User guide to become familiar with the features of this product before operating. Failure to operate the product correctly can result in damage to the product or personal property, and cause serious injury. This is a sophisticated product. It must be operated with caution and common sense and requires some basic mechanical ability. Failure to operate this product in a safe and responsible manner could result in injury or damage to the product or other property. This product is not intended for use by children without direct adult supervision. DO NOT use with incompatible components or in any way otherwise as mentioned or instructed in the product documents provided by our company. This Safety Guidelines herein contain instructions for safety, operation and maintenance. It is essential to read and follow all of the instructions and warnings in the user manual, prior to assembly, setup or use, in order to operate the battery correctly and avoid damage or serious injury.

■ WARNING

To avoid fire, serious injury, and property damage, observe the following safety guidelines when using, charging, or storing your batteries.

Battery Safety Guidelines.

Battery Use

1. Prevent the batteries to come into contact with any kind of liquid. DO NOT leave batteries out in the rain or near a source of moisture. DO NOT drop the battery into water. If the inside of battery comes into contact with water, chemical decomposition may occur, potentially resulting in the battery catching on fire, and may even lead to an explosion.

2. If the battery falls into water with the stabilizer during use, take it out immediately and put it in a safe and open area. Maintain a safe distance from the battery until it is completely dry. Never use the battery again, and dispose of the battery properly as described in the Battery Disposal section below.

3. If the battery catches fire, use water, water spray, sand, fire blanket, dry powder, or carbon dioxide fire extinguisher immediately to put out the fire. Please extinguish the fire by applying the methods recommended above according to the actual situation.

4. Never use Non-our batteries. If replacement or backup is needed, please purchase new batteries from our official website or authorized channels. Our company takes no responsibility for any damage caused by non-our company batteries.

5. Never use or charge swollen, leaky, or damaged batteries. New use or charge if battery smells, or overheats (exceeding maximum temperature of 160/71 °C). If the batteries are abnormal, contact your agent or a authorized dealer for future assistance.

If your batteries are abnormal, contact our company or a authorized dealer for further.

6. The battery should be used in temperatures from 0°C to 40°C. Use of the battery in environments above 40°C can lead to a fire or explosion. Use of battery below 0°C can lead to serious damage.

7. Do not use the battery in strong electrostatic or electromagnetic environments. Otherwise, the battery protection board may malfunction.

8. Do not disassemble or use any sharp object to puncture the battery in any way. Otherwise the battery may leak, catch fire, or explode.

9. Do not mechanically strike, crush, or throw the batteries. DO not place heavy objects on the battery or charger.

10. Electrolytes inside the battery are highly corrosive. In case of accidental contact of any electrolytes with your skin or eyes, rinse immediately. Wash the affected area with water for at least 15 minutes and seek advice as soon as possible.

11. Do not use the battery if it has been involved in a impact from a crash or heavy impact.

12. Do not heat the battery and never put battery in a microwave oven or in a pressurized container.

13. Do not place the battery cell on a conductive surface (such as a metal desk table).

14. Prevent use of wires or metal objects that could cause positive or negative short-circuit to the battery.

15. If the battery terminal is dirty, wipe it with a clean, dry cloth. Otherwise it will cause a bad battery connection, which may result in energy loss or charging failure.

Battery Safety Guidelines.

Battery charging

1. Always use a our company approved adapter for charging. Our company take no responsibility if the battery is charged using Non-Our company charger.
2. Do not put the battery and charger near flammable materials or on flammable surfaces (such as carpet or wood). Never leave the battery unattended during charging to prevent any accident.
3. Do not charge the battery immediately after use, because the battery temperature may be too high. Do not charge the battery until it cools down to near room temperature .Charging the battery with its temperature over 40°C or lower than 5°C may lead to leakage, overheating, or battery damage.
2. Never leave the battery unattended during charging to prevent any accident.
4. Examine the charger before use, make sure there is no damage to the enclosure, cord, plug, or other parts. Never use a damaged charger. Do not clean the charger with denature alcohol or other flammable solvents. Never use a damaged charger.

Battery Storage

1. Keep batteries out of the reach of children and pets.
2. DO NOT leave the battery near heat sources such as a furnace or heater. or inside of a vehicle on hot days. Never expose the battery in any environment with temperature of over 60°C. The ideal storage temperature is 22°C~28°C.
3. Store batteries in dry environment.
4. Do Not leave the battery unused for too long after it has been completely discharged to prevent over-discharge of battery which may result in battery damage and permanent damage.

Battery Maintenance

1. Never use the battery when the temperature is too high or too low.
2. Never store the battery in environments with a temperature higher than 60°C.

Travel Notice

1. Discharge the battery power to 5% or lower before carrying the battery on an airline flight, Only discharge the battery in a fireproof location, ideally in a dry and open area.

Battery Safety Guidelines.

■NOTICE

Battery Use

Make sure the batteries are fully charged before each time of use.

Battery Charging

The Intelligent Battery will stop charging when it is full. Disconnect the batteries from the charger when fully charged.

Battery Storage

1. Discharge the battery to 40%~65% if it will NOT be used for over 10 days. This can greatly extend the battery life.
2. The battery enters hibernation mode when voltage gets too low. Charge the battery will bring it out of hibernation.

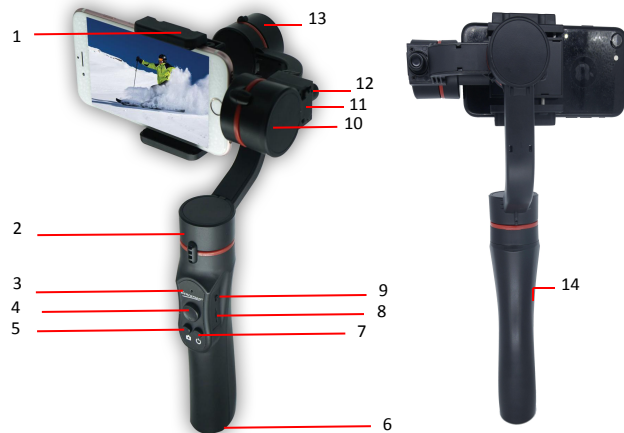
Battery Maintenance

1. Never over-discharge, as this may lead to battery cell damage.
2. Battery performance may be affected if not used for a long time.
3. Discharge and charge the battery completely once every 3 months to keep it active.

Battery Disposal

If the battery cannot be fully discharged, do not leave it in the recycling box, but contact a professional battery disposal/recycling agent for future assistance.

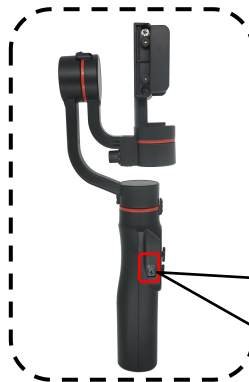
Get



- | | |
|-----------------------|-----------------------------|
| 1 - Mobile Clamp | 8 - Lock Switch |
| 2 - Pan Axis | 9 - Adjust Switch |
| 3 - Indicator Light | 10 - Pitch(Tilt) Motor |
| 4 - Joystick | 11 - Smartphone Bracket |
| 5 - Shooting Mode | 12 - Balance Knob |
| 6 - 1/4 Threaded Hole | 13 - Roll Motor |
| 7 - Power ON/OFF | 14- Micro USB Charging Port |

*Smartphone not included

Charging Stabilizer



Charging Stabilizer

Insert the provided Micro-USB Cable into the Micro-USB Port of the Stabilizer.
It takes approximately 3 hours to fully charge the Stabilizer. On Full charge, the Stabilizer operates up to 4 hours.
Prior to use, make sure the stabilizer is fully charged.

Smartphone Placement



Place the Smartphone into the the Bracket , as show on the left. The bracket expands and can fit most smartphon. Silde the smartphone all the way to right until it touches Tilt Motor.

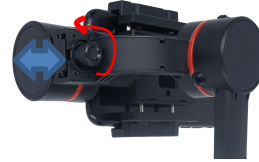
Depending on the size and weight of your smartphone. you may need to balance it prior to use.

IMPORTANT!

Do not turn the Stablizer on before attempting to position your smartphone in the bracket.

10

Smartphone Balance



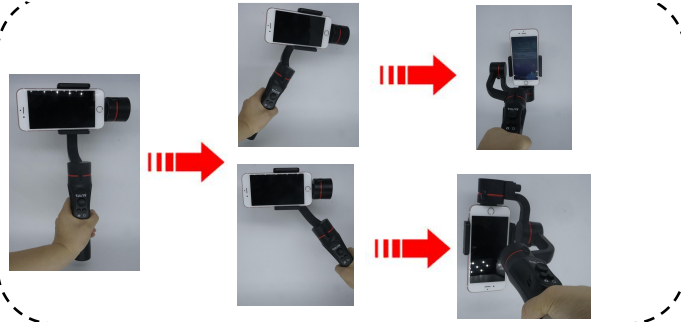
If the smartphone does not stay leveled, lossen the Balance Knob by turning the Pitch(Tilt) Motor until the smartphone blance itself. Tighten the Balance knob by rotating it clockwise.

Proper adjustment of gravity center ensure better power saving during operation. it may lead to more power consumption on the motors, and can greatly affect the torque output.

Switching From Vertical to Horizontal Shooting

At vertical shooting satus:

Keep the phone facing yourselft and the Stablizer handle upright to exit vertical shooting Adjust Pan and Pitch(Tilt) Maully when the indicator light displays either green or red.



11

Getting to Know the Panel



Status Indicator

1. Blue Light: Stabilizer in operation
2. Green Light: Stabilizer in operation.
3. Red Light: Flashing always on (low on charge-shut down-recharge). Double Flashing (Stabilizer overload-shut down-restart)
4. Yellow Light: -error-shut down-restart.

Shifter lever Operation

When control the smartphone movement when pushed up/down and left/right

Charging port

Connect the stabilizer with a USB power source using a Micro USB cable for charging.

Shooting Mode

Press once to take a picture after connect the APP.

Power On:

Turns the Stabilizer on and OFF. Press and hold until indicator light turns on and flashes blue. Double Click to bring the camera to its original position.

Lock Switch

Up position: entering Following Model (Tilt is locked)

Down position: entering Following Mode (Tilt is unlocked)

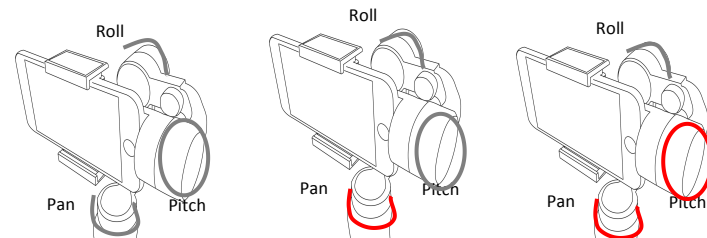
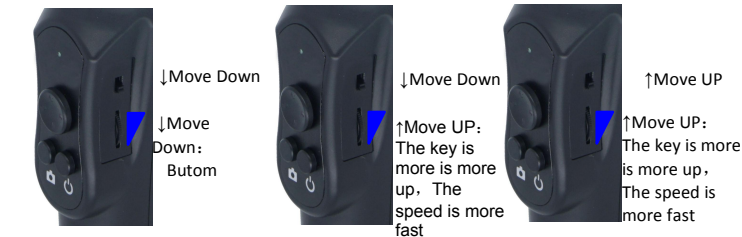
Adjust Switch

Down position: Locking Mode (Pitch/Tilt). Pan roll motors are locked while holding the camera still).

UP Position: Locking Mode off.

Introduction of Gimbal Control Mode

① Locking Mode ② Pan Following Mode ③ Following Mode



Locking Mode:

All 3 axes are locked. Tilt(Pitch), Roll and Pan'. Use joystick up and down to control tilt of smartphone. Use joystick left and right to manually pan camera left/right

Pan Following Mode:

All 3 axes are locked. Tilt(Pitch), Roll and Pan'. Pan axis rotates smoothly with turn of wrist. Use Joystick up and down to control tilt of camera. (The adjustment can be control by hands)

Following Mode:

All 3 axes are unlocked. The camera pans and tilts(pitch)following the movement of the stabilizer. Push the Joystick left/right allows manual control of the roll axis

App Operations

Connecting the Stabilizer to Smartphone

- 1.Power on the stabilizer;
- 2.Turn on Bluetooth in Setting of your smartphone;
- 3.Tap 'Gimbal's App icon to open. Tape the signal icon on the top of the APP screen search for nearby signals, choose your stabilizer to connect.

Product Specifications

	Min.	Standard	Max.	Remarks
Input Vol.	3.4V	3.7V	4.2V	
Operation Current	150mA	1500mA	3000mA	
Operation Temperature	0℃		40℃	
Operation Time		5h		Well balanced with camera
Weight		408g		
Pitch Angle Range		330°		
Roll Angle Range		180°		
Pan Angle Range		330°		
Compatible Models		Smartphone with sizes under 6.0, Gopro3/4/5/6		
Controllable Pitch Angle	-160°		+160°	
Controllable Roll Angle	-30°		+30°	
Controllable Pan Angle	-160°		+160°	
Payload		75~200g		
Charging Time		3H		
Charging Voltage		5V		
Charging Current		1A		

Warranty Card

Warranty Period

1. Customers are entitled to replacement of free repair service in case of quality defect(s) found in the product within 15 days upon receipt of the product.
2. Customers are entitled to free repair service from our company for any products proven defective in material or workmanship that results in product failure during normal consumer usage and conditions within the valid warranty period, which is 12 months counting from the date of delivery.

This warranty does not apply to followings

1. Products subjected to unauthorized repair, misuse, collision, neglect, mishandling, soaking, accident, and unauthorized alteration.
2. Products subjected to improper use or whose labels or security tags have been torn off or altered.
3. Products whose warranty has expired.
4. Products damaged due to force majeure, such as fire, flood, lighting, etc.

Warranty Claim Procedure

1. If failure or any problem occurs to your product after purchase, please contact a local agent for assistance.

Warranty Card

Custom Information

Customer Name:

Contact No:

Address:

Sales Information

Sales Date:

Product Serials No:

Dealer:

Contact Tel No:

#1 Maintenance Record

Service Date:

Signature of Repairman:

Cause of Problem:

Service Result:

☐ Solved

☐ Unsolved

☐ Refunded/Replaced



Certifcate of Quality

This products is confirmed to meet
quality standards and Permitted
for sales strict inspection.

QC inspector: _____